

# HammerDB

## HammerDB Themes

This guide gives you an introduction to changing the look and feel of HammerDB with themes.

Introduction .....	1
Installation and Configuration .....	1
Support and Questions .....	5

---

### ***Introduction***

HammerDB supports the use of Themes to provide an alternative look and feel on both Windows and Linux platforms. The available themes depend upon the operating system installed. With Windows by default there is the native Windows theme than is inherited by the HammerDB application. On Linux there is a default theme and on both Windows and Linux there is an alternative greyscale theme. The theme is chosen on startup.

---

### ***Installation and Configuration***

In the HammerDB home directory there is a configuration file called config.xml. In this file the option `ttk_theme` under `look_and_feel` determines the theme, the valid options are as follows:

Default theme : classic  
Alternative theme : modern

For example you would select the alternative theme by configuring config.xml as follows:

```
<?xml version="1.0" encoding="utf-8"?>
<hammerdb>
<look_and_feel>
<ttk_theme>
  <theme>modern</theme>
</ttk_theme>
<code_highlight>
  <highlight>true</highlight>
</code_highlight>
</look_and_feel>
```

Figures 1 to 4 illustrate the appearance under these themes on both Windows and Linux.

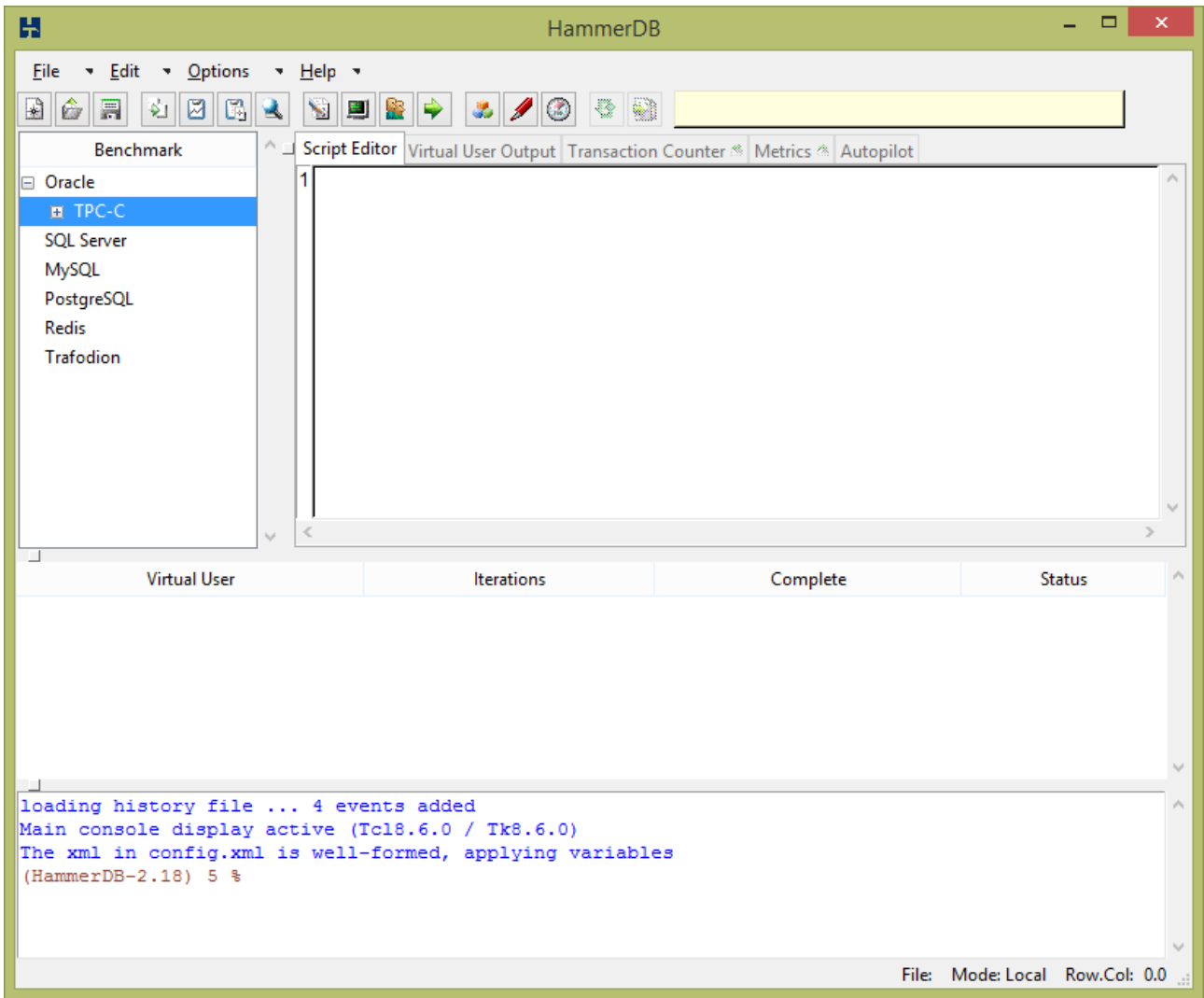
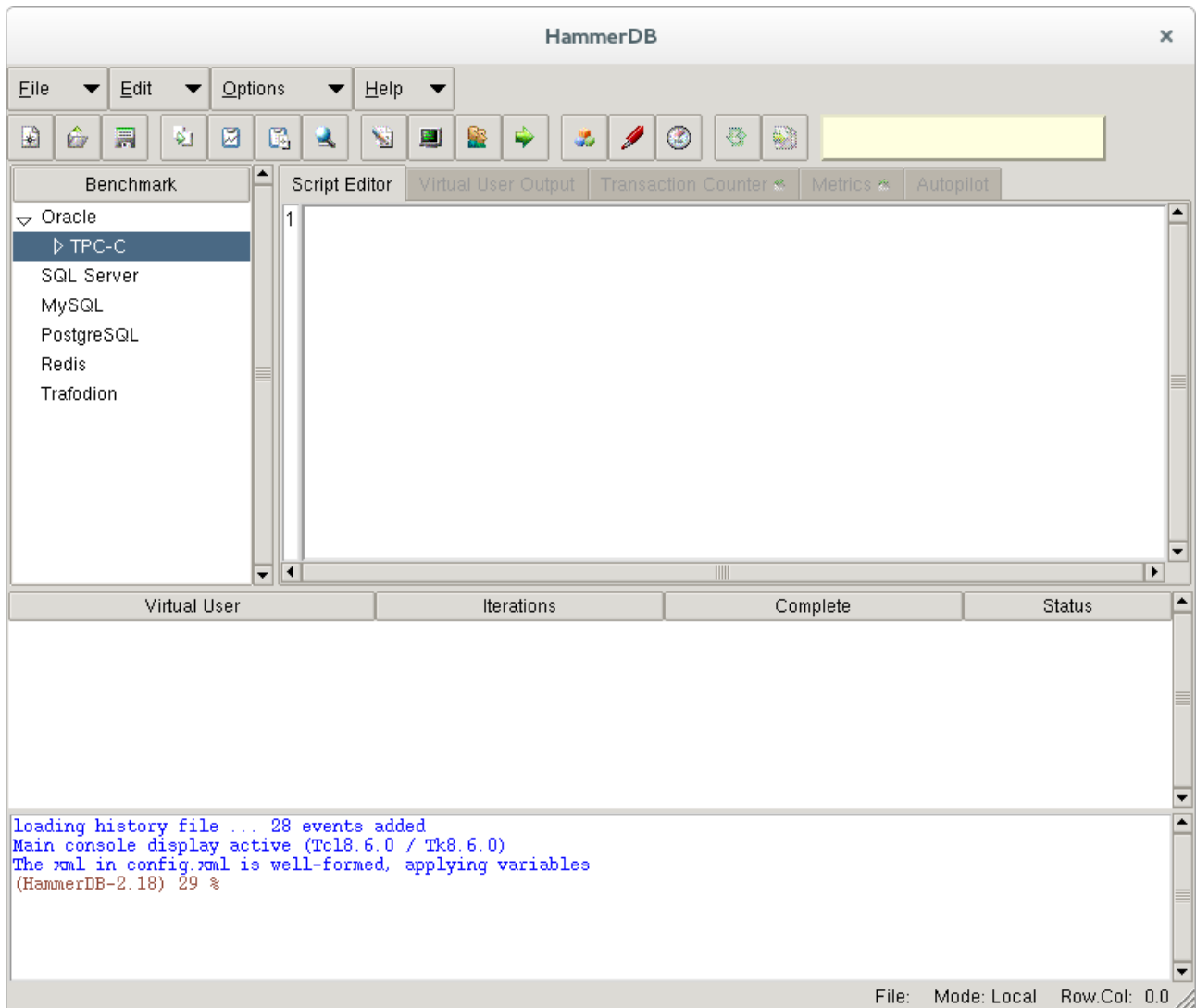


Figure 1 Classic Windows Theme



**Figure 2 Classic Linux Theme**

For advanced users the default Linux theme can also be displayed under Windows by setting the configuration option to “clam”.

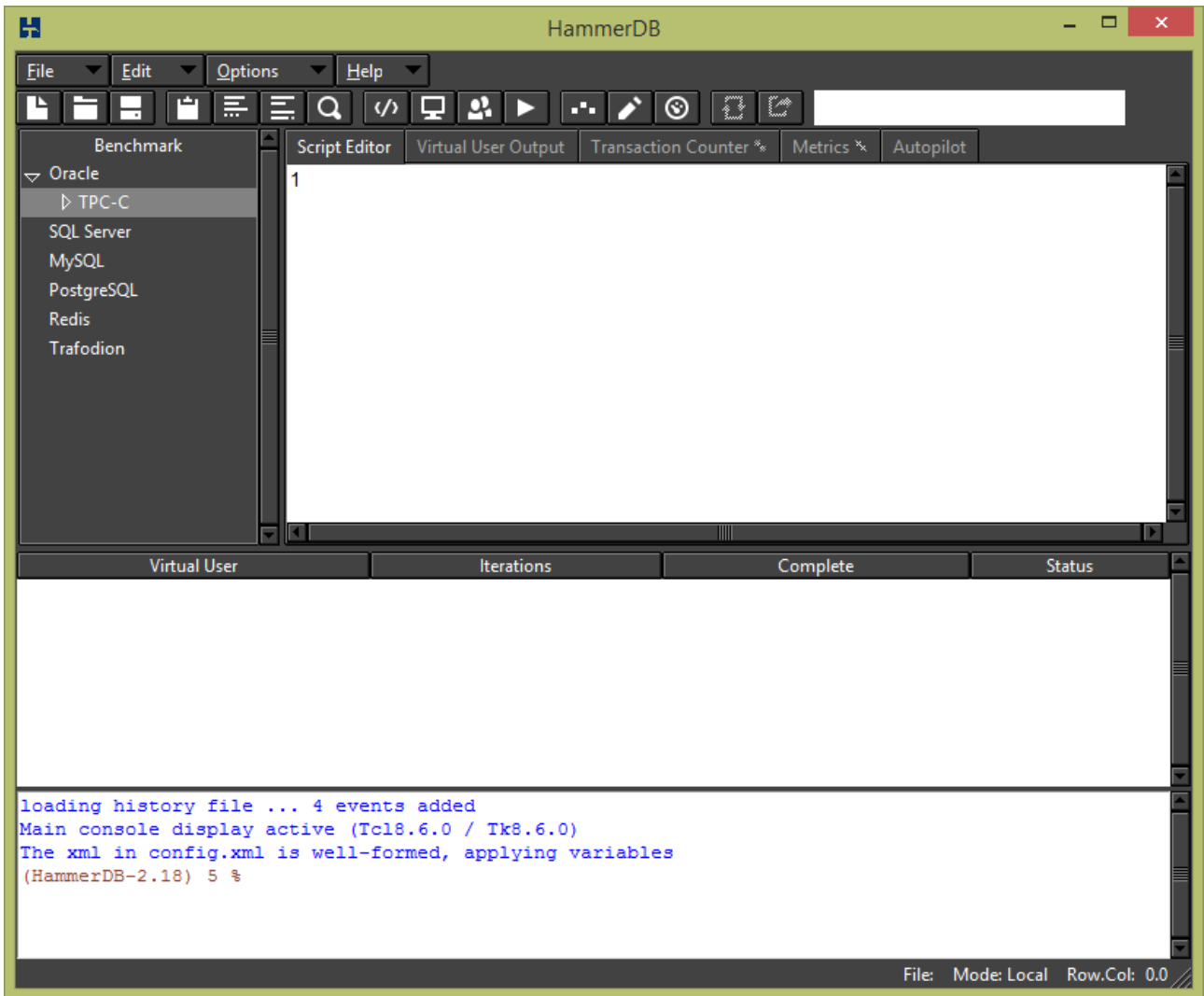


Figure 3 Modern Windows Theme

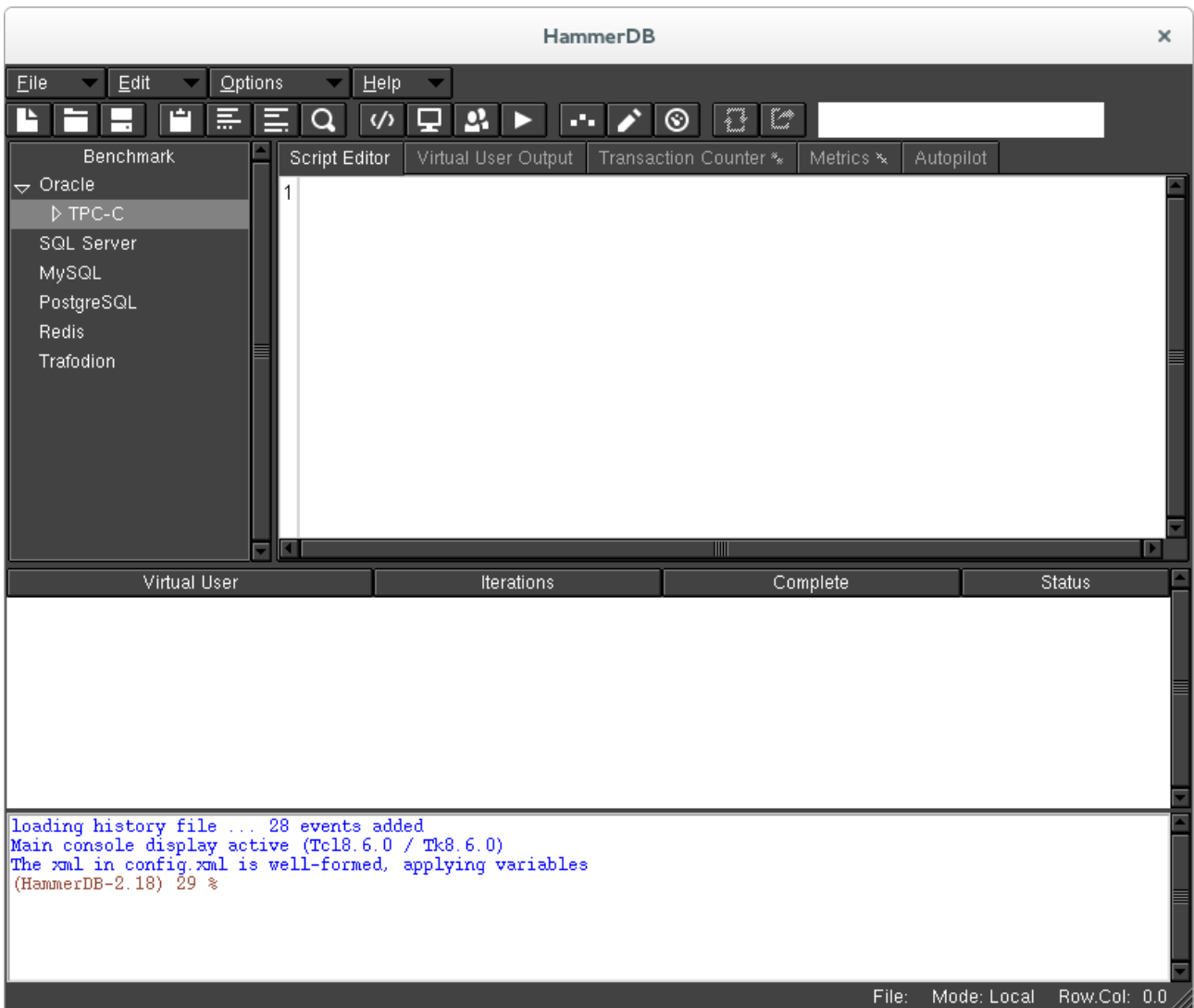


Figure 4 Modern Linux Theme

---

## Support and Questions

For help use the HammerDB Sourceforge forum available at the HammerDB sourceforge project.